

# Media Buddy

Portable Data Manager

## Quick Start Guide



DIGITAL  
FOCI

[www.digitalfoci.com](http://www.digitalfoci.com)

3111 Via Mondo  
Rancho Domingues, CA 90221  
USA

DIGITAL  
FOCI

Thank you for choosing Digital Foci.

Please use this Quick Start Guide to get started with your Media Buddy.

For more detailed explanations and examples about how to use your Media Buddy, refer to the included User's Guide.

At Digital Foci, our mission is to *enhance your life by smart usage of digital technology.*

We promise to provide you:

- ♦ Easy-to-use products to help you manage and enjoy your digital content
- ♦ Attractive products to accentuate your unique style
- ♦ Education and support to help you understand the quickly changing digital technology

We aim to provide you a level of customer satisfaction that exceeds your expectations.

Let Digital Foci help *Optimize your Digital Living.*

For more information about your Media Buddy and other products from Digital Foci, please visit our website at:

[www.digitalfoci.com](http://www.digitalfoci.com)

Congratulations on purchasing your new Media Buddy Portable Data Manager.

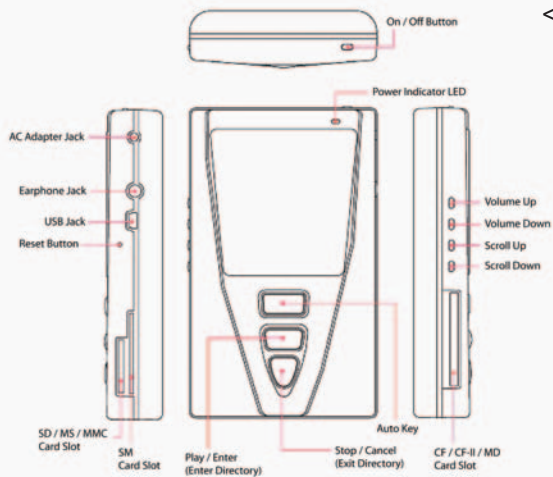
Media Buddy is:

- A **portable photo storage device** for storing your valuable photos on the road without a computer.
- A **portable hard drive** for backing up important files from your computer.
- A **multi-format memory card reader** for accessing data on the memory cards used in your digital camera, MP3 player, mobile phone and PDA.
- A **data bridge** for transferring large files between computers and from any digital device that utilizes memory cards.
- A **MP3 player** for storing and listening to your favorite MP3 files.

#### Package Contents

- ♦ Media Buddy
- ♦ 2.5" hard drive (Pre-installed)
- ♦ Li-Ion battery (Pre-installed)
- ♦ USB cable
- ♦ AC/DC adapter 100-240 V
- ♦ Earphones
- ♦ Carrying case
- ♦ User's Guide
- ♦ Quick Start Guide
- ♦ Resource Disc
- ♦ Warranty Card

## Media Buddy Layout



## Powering Media Buddy

### Charging the battery

Charge Media Buddy for at least 4 hours with the AC Adapter prior to using Media Buddy for the first time.

### Power Indicator LED

**Green:** Media Buddy is powered on.

**Red:** Media Buddy is charging.

**Orange:** Media Buddy is powered on and charging. The on-screen battery indicator will flash.

### Battery Saving Feature

After 10 seconds of inactivity, the backlight dims. After 2 minutes, Media Buddy will auto-shutoff.

### Low Battery Warning

When Media Buddy is low on battery, the battery icon will flash and show no bars.

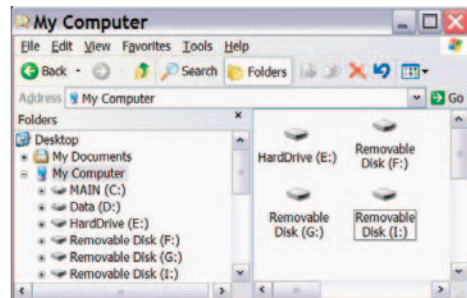
## Connecting Media Buddy to Computer

Connect Media Buddy to your computer via the included USB cable.

Your computer will automatically recognize\* Media Buddy and show four devices:  
- 1 hard drive and 3 removable devices

\* For Windows 98SE/2000, and MacOS 8.6 and 9.x, device drivers from the Resource Disc is required.

On Windows, it will look like this:



The devices are listed in the following order. (Exact drive letter assignments and hard drive labels may vary.)

(E:) Media Buddy Hard Drive

(F:) CF memory card slot

(G:) SM memory card slot

(H:) SD/MMC/MS memory card slot

You can access these devices just as you would any device on your computer.

## Menu Structure

<MODE Select>

FILE Mode

MP3 Mode

FILE Mode

<DEVICE Select>

HD Device

Card Device

FILE Mode Detailed Screen

MP3 Mode

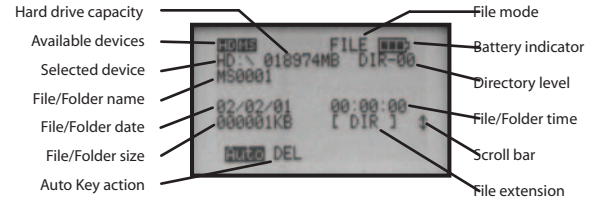
<DEVICE Select>

HD Device

Card Device

MP3 Mode Detailed Screen

## FILE Mode Detailed Screen



## MP3 Mode Detailed Screen



## Navigating Directory Structure

### Play/Enter and Stop/Cancel buttons

The Play/Enter button is used to select the highlighted menu option or enter into the highlighted directory folder.

The Stop/Cancel button is used to exit out of the current menu option or out of the current directory folder and return to the previous option or folder.

### Scroll Up and Scroll Down buttons

The Scroll Up and Scroll Down buttons are used to move the cursor to highlight the desired menu option and to browse through the folders and files.

## Understanding Media Buddy Folder Names

Each time you use the copy function on Media Buddy, a new folder will be created to store your copied files.

The folder names are made up of 2 pieces of information.

The first two characters will be letters indicating the type of memory card used.

The next 4 characters will be sequential numbers starting from '0001' that show the order that the folders were created.

These letter prefixes correspond to the memory card types:

CF = CompactFlash

SD = Secure Digital (includes MMC)

SM = SmartMedia

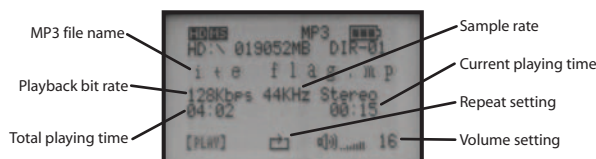
MS = Memory Stick

**Example: HD \ MS 0038**

Memory Stick  
Format      38th folder of  
this format

## Playing MP3 files on Media Buddy

- From the <MODE Select> screen, select 'MP3 Mode'.
- Select the device containing the MP3 files to play.
- Locate the desired directory folder.  
**Note:** In MP3 Mode, only MP3 files will be displayed.  
- No File - will display if the folder has no MP3 files.
- Select the MP3 file to play and press Play/Enter.



## Using Media Buddy as a Portable Picture Storage Device

### Copying an entire memory card

- Insert the memory card into the appropriate slot. Verify on the screen that the corresponding icon for the inserted card is displayed.
- Make sure that Media Buddy is at the <MODE Select> screen and that 'FILE Mode' is highlighted. Press Auto Key to begin copying.
- Note the created folder name.
- At completion, a confirmation screen will show.
- Press the Play/Enter button to confirm.

**Note:** If multiple memory cards are inserted when the Auto Key button is pressed, Media Buddy will copy each memory card in succession, in different folders.

### Copying a specific folder or file

- Insert the memory card into the appropriate slot. Verify on the screen that the corresponding icon for the inserted card is displayed.
- At the <MODE Select> screen, select 'FILE Mode'.
- At the <DEVICE Select> screen, select the memory card with the data to be copied.
- Locate the folder or file to copy by navigating through the memory card directory.
- When you find the folder or file to copy, press the Auto Key button to make the copy.
- At completion, a confirmation screen will show.
- Press the Play/Enter button to confirm.

**Note:** If you copy multiple folders and files in succession from the same card without removing it, all the copied contents will be placed in the same folder.

**Note:** Copying the same file twice into the same folder, will prompt the -FILE EXISTS- warning. The file will NOT be copied.

**Warning:** DO NOT remove memory cards when data is being transmitted. Doing this may crash your computer and cause data loss.

### Tips for playing MP3 files

- Use the Volume Up/Down buttons to adjust the volume. (Max. is 32.)
- To toggle between pause and play, press the Play/Enter button.
- Use Auto Key to toggle between repeating a single file and repeating all files in selected directory folder.
  - If the Repeat Setting icon is not displayed, the current file will repeat.
  - If the Repeat Setting icon is displayed, all MP3 files in the selected directory folder will repeat.