

Picture Porter

Handheld Picture Viewer with
Hard Drive and Memory Card Reader

Quick Start Guide



DIGITAL
FOCI

www.digitalfoci.com

3111 Via Mondo
Rancho Domingues, CA 90221
USA

DIGITAL
FOCI

Thank you for choosing Digital Foci.

Please use this Quick Start Guide to get started with your Picture Porter.

For more detailed explanations and examples about how to use Picture Porter, refer to the included User's Guide.

At Digital Foci, our mission is to *enhance your life by smart usage of digital technology.*

We promise to provide you:

- ♦ Easy-to-use products to help you manage and enjoy your digital content
- ♦ Attractive products to accentuate your unique style
- ♦ Education and support to help you understand the quickly changing digital technology

We aim to provide you a level of customer satisfaction that exceeds your expectations.

Let Digital Foci help *Optimize your Digital Living.*

For more information about Picture Porter and other products from Digital Foci, please visit our website at:

www.digitalfoci.com

Congratulations on purchasing your Picture Porter - handheld picture viewer with hard drive & card reader.

With Picture Porter you can:

- ♦ Enjoy pictures, videos, and music anytime, anywhere
- ♦ Save precious vacation pictures directly from digital camera memory card so you can keep snapping away
- ♦ Show pictures on TV to share with your family and friends
- ♦ Back up important files from your computer
- ♦ Carry your personal library of photos, music, and videos with you to easily share with your friends

Supported Memory Card Formats:

CompactFlash I/II, MicroDrive, Smart Media, MultiMedia Card, RS-MMC, Secure Digital, miniSD, Memory Stick, MS PRO, MS Duo, MS PRO Duo

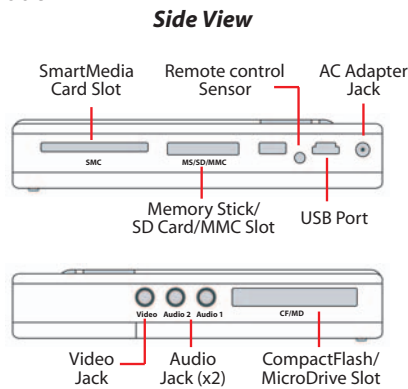
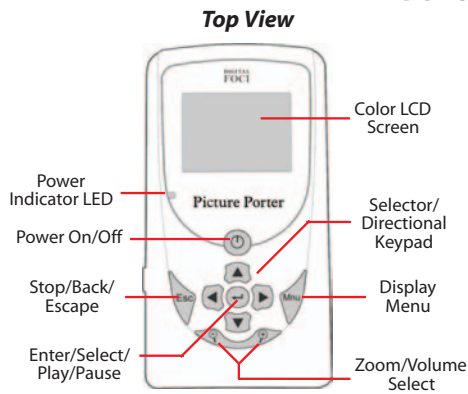
Supported File Formats:

- ♦ Image formats: JPEG, TIFF, BMP, RAW
- ♦ Video formats: MPEG-1, MPEG-4, MJPEG, DivX 5.x
- ♦ Audio formats: MP3, WMA, AAC, WAV

Package Contents:

- | | | |
|----------------------|-----------------|---------------------|
| ♦ Picture Porter | ♦ USB cable | ♦ Resource Disc |
| ♦ Li-Ion battery | ♦ Earphones | ♦ User's Guide |
| ♦ Video/audio cables | ♦ AC adapter | ♦ Quick Start Guide |
| ♦ Remote control | ♦ Carrying case | ♦ Warranty Card |

Device Layout



Powering Picture Porter

Charging the battery

Charge Picture Porter for at least 6 hours with the AC adapter before first use.

Power On/Off

To turn on Picture Porter, press and hold the On/Off button for 3 seconds. The power indicator LED will light up *green*.

To turn off the device, press and hold the On/Off button for 5 seconds.

Low Battery Warning

The green portion of the battery icon on the screen indicates the battery life remaining.

When Picture Porter is low on battery, the battery icon will turn *red* and continue to decrease. A full red battery indicates that the battery is almost completely empty.

Copying Memory Card Data

1. Insert the memory card into its designated slot. For all cards except SmartMedia, insert the card facing *down*. For SmartMedia, insert it with the gold connector side facing *up*.
2. Once the icon for the inserted memory card appears on the screen, navigate to and highlight the memory card icon.
3. Press **Mnu** to access the menu options.
 - ◆ Select **Full Backup** to copy the entire memory card contents to Picture Porter.
 - ◆ Select **Photo Backup** to copy only the photo and video files from the card to Picture Porter.
4. Select Yes to confirm the folder that will be created. This starts the copy progress.
5. The created folder and copied contents will be located in the **Backup** directory of Picture Porter.
6. Each 8-character folder name is made up of 2 pieces of information:
 - a) The first few characters are letters that indicate the type of memory card used:
 - MS = Memory Stick, MS Duo
 - MSPRO = MS PRO, MS PRO Duo
 - SM = SmartMedia
 - SD = Secure Digital
 - MMC = MultiMedia Card
 - CF = CompactFlash, MicroDrive
 - b) The next few characters are sequential numbers, starting from '0,' that indicate the order in which the folder was created.

For example:

/ **BACKUP / CF - 00002**

Compact Flash Format 3rd folder of this format

Using Picture Porter on Your Computer

Connect Picture Porter to your computer to import photos and music to Picture Porter, back up important files from you computer, and use as a memory card reader.

Compatible operating systems

Picture Porter is compatible with:

- ◆ Windows XP Home/Pro, ME, 2000*, 98/SE*
- ◆ Macintosh OS10.0.x or later, OS 9.x, OS 8.6*
- ◆ Linux OS kernel versions 2.4.x or later

* If you are using Win 2000 (SP2 or earlier), Win 98/SE, or Mac 8.6, you need to install the device driver from the Resource Disc. Refer to *Section 7 Driver Installation* in the User's Guide.

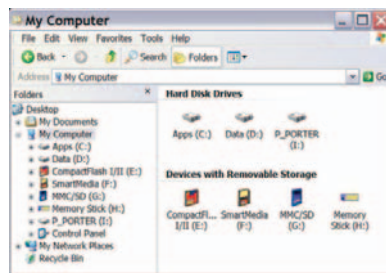
Connecting Picture Porter to computer

1. Connect Picture Porter to your computer via the included USB cable.

Note: It is recommended that you plug in the AC adapter when connecting Picture Porter to your computer to ensure stable power supply.

2. Once connected, your computer will recognize Picture Porter and show five devices:
 - 1 hard drive and 4 removable devices

On Windows, it will look like this:



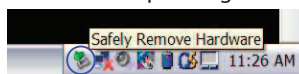
The devices will be listed in this sequence: (Exact drive letters assignments and hard drive labels may vary.)

- (E:) CompactFlash memory card slot
- (F:) SmartMedia memory card slot
- (G:) MMC/SD memory card slot
- (H:) Memory Stick memory card slot
- (I:) Picture Porter hard drive

You can access these devices just as you would any device on your computer.

Disconnecting Picture Porter from computer

To properly remove Picture Porter from your computer, disable the device before unplugging it. For Windows XP, click on the Safely Remove Hardware icon in the icon tray and select the USB Mass Storage Device corresponding to Picture Porter to disable it.



Viewing Photos on Picture Porter

To view photos on full screen:

1. Navigate to the picture you want to view and press **Enter** to display it.
2. To see the next photo, press **Down**.
3. To see the previous photo, press **Up**.
4. To rotate the photo by 90°, press **Enter**.
5. To zoom a photo, press the **Zoom In** button.
6. Once zooming, you can use the directional arrows to pan to a specific part of the photo. Press **Esc** to return to normal view.

To play a photo slideshow:

1. Select and display the first photo of the slideshow you want to play.
2. Press **Mnu** and select *Slide Show*.
3. Use **Left** and **Right** buttons to adjust the time interval between each photo display.
4. Press **Esc** to end the slideshow.

Viewing Videos on Picture Porter

1. Navigate to the video you want to play and press **Enter**.
2. To adjust volume, use the **Volume Select** button.
3. Press **Enter** to toggle between pause and play.
4. Press the **Up/Down** buttons to fast forward/rewind the video. Press **Enter** to resume playing.
5. Press and hold the **Right/Left** buttons to scan forward/scan rewind the video. The video will resume playing when you release the button.
6. Press **Esc** to stop the video.

Playing Music on Picture Porter

1. Plug in the earphones into one of the 'Audio' jacks on Picture Porter.
2. Navigate to the song you want to play and press **Enter**.
3. To adjust volume, use the **Volume Select** button.
4. Press **Enter** to toggle between pause and play.
5. Press the **Up/Down** buttons to play the previous/next song.
6. Press and hold the **Right/Left** buttons to fast forward/rewind the song. Music will resume playing when you release the button.
7. Press **Mnu** to access playback options. You can:
 - ◆ Show current playlist and select song to play
 - ◆ Toggle between *Shuffle On* and *Shuffle Off*
 - ◆ Toggle between *Repeat Single* and *Repeat All*
 - ◆ Select equalizer mode
 - ◆ Play music in the background while using other functions on Picture Porter.
8. Press **Esc** to stop playing the song.

Viewing Photos & Slideshows on TV

1. Connect the audio connectors (colored white and red) to the audio input jacks of the TV. Connect the other end of the cable into one of the 'Audio' jacks on Picture Porter.
2. Connect one end of the video cable (colored yellow) to the video input jack of the TV, and the other end into the 'Video' jack on Picture Porter.
3. Set the TV to the proper video mode for the input that Picture Porter is using.
4. To operate Picture Porter, use either its control panel or the included remote control.

Read the User's Guide to learn about more about using your Picture Porter, such as how to copy and delete files, play music in the background, create on-the-fly playlist, change system settings, and more.